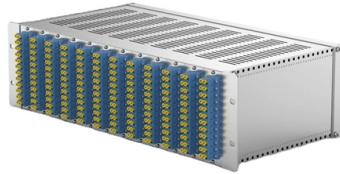


Terminal box 1 input 1 output



Overview

A1: A one in multiple out junction box is a modular device that takes a single input (power or signal) and distributes it to several output terminals. Internally, it uses conductive busbars or PCB traces to ensure each output receives the same input voltage or signal. It enables clean and organized electrical distribution within control cabinets, lighting panels, and automation systems. The structure typically includes:

One. I'm looking for something like a 10 output-1-input terminal block, since I don't want to solder multiple wires to one 12V input. Does anyone know of such a device that connects multiple wires to one input (other than crimps, soldering, or mashing into one terminal block slot)?

I've looked with. A large variety of small enclosures: polycarbonate enclosure PK, aluminum enclosure GA, small enclosure KX, carbon steel in the terminal box versions with and without a flange, e-boxes, and bus enclosure. Complete with main removeable cover.



Article Content

Design elements

There are many different types of flowcharts, and each type has its own repertoire of boxes and notational conventions. The two most common types of boxes in a flowchart are:
 (1) a

Common Terminal Blocks : Number of input/outputs 1-to-N for

Common Terminal Blocks : Number of input/outputs 1-to-N - Electrical & Controls a variety of electrical components and controller available 24 hrs. Free delivery, no minimum order.

uxcell 1 Input 6 Output DIN Rail Terminal Blocks 660V

uxcell 1 Input 6 Output DIN Rail Terminal Blocks 660V 250A Connectors Distribution Block Brand: uxcell 3.9 (9) ₹3,960

Basic Input and Output in Python

In this tutorial, you'll learn how to take user input from the keyboard with the input() function and display output to the console with the print() function. You'll also use

TERMINAL BLOCKS

CTC terminal junction box terminal blocks are available in single input and output, continuous output, dual input and output, and triaxial input and output configurations.

1 in 4/6/10/12 out Terminal Junction Box

This terminal box is practical and particularly suitable for electrical wiring tasks that require distributing a single input signal or power supply to multiple devices or

A Beginner's PLC Overview, Part 3 of 4: PLC Inputs and

Some examples of discrete input devices would be things like light switches, push-buttons and proximity switches. Examples of discrete output

Documentation EtherCAT Terminals, digital input, oversampling

The EL1262-0010 is a universal, high performance oversampling terminal for digital input and output signals. As an EtherCAT oversampling terminal, it increases with this XFC process the temporal

Digital I/O Basic Knowledge

This section explains aspects of digital input and output, from applications and types to interface circuit characteristics, in an easy-to-understand way.

Ukk 250A Single Input Multiple Output Power

An electric power distribution terminal block is a convenient, economical and safer way to distribute power from a single input source to multiple outputs. Complete

bash script, echo output in box

Centering Text, ASCII Art, and BOXES!!! The other flaw boxes has is that if you know how to use Bash to center text to the with of the terminal, boxes will still align the box to the left of the

Define the following and draw their symbols a Process

It is an oval or a rounded rectangle. A terminal box with the word "START" is used at the beginning of the flowchart and a box with the word "STOP" is used at the end

Multi Current DIN Rail Terminal Block Junction Box with 1 Input and ...

*1 input, multiple outputs: The terminal box has 1 input and allows for multiple outputs, with a combination slot that enables flexible combinations and matches to improve work efficiency.

Junction & Terminal Boxes

A large variety of small enclosures: polycarbonate enclosure PK, aluminum enclosure GA, small enclosure KX, carbon steel in the terminal box

Simulink

I'm writing a simulink model in which I would like to distribute a single input with dimensions of 1024X2 to two (identical) outputs. I guess it should be

Where Can I find a Multi-Output-One-Input Terminal

I'm looking for something like a 10 output-1-input terminal block, since I don't want

Common Terminal Blocks

Toyogiken Common Terminal Blocks are versatile components designed for

Single Input Multiple Output Spliceable Wire Connector

Single Input Multiple Output Spliceable Wire Connector are an innovative connectivity solution for modern electrical engineering, specifically designed for

Terminal boxes | Junction boxes | Ex | Ex e | Ex d | ATEX

We offer bespoke, custom-made terminal boxes and terminal box combinations, as well as standard products with short delivery times. Our products are certified for installation technologies all over the

Dual Power Smart Selector

If Input A has power, the output will always draw power from Input A. If Input A loses power, the unit automatically switches the output to Input B. When Input A power returns (12V or higher), it

Phoenix Contact 2700173 Inline Terminal; 8 Inputs;

Phoenix Contact Inline Series —The Flexible I/O System for the Control Cabinet | Modular IO Terminals & Block IO Modules: Discover the practical advantages of

FX INPUT AND OUTPUT TERMINAL BLOCKS USER S GUIDE

Some terminal blocks directly extend inputs and outputs of PLC. Other terminal blocks are equipped with diversified built-in devices, and function only as inputs or only as outputs.

Single Input Multiple Output Spliceable Wire Connector

This kind of terminal block adopts modular splicing design, users can flexibly expand the number of wiring ports according to the actual demand, which greatly

Basic Flowchart Symbols and Meaning

See flowchart's symbols by specifics of process flow diagram symbols and workflow diagram symbols. Flowchart Terminal Box Input

Ukk 250A Single Input Multiple Output Power

These blocks are used in electrical power distribution. An electric power distribution terminal block is a convenient, economical and safer way to distribute power from

Terminal boxes

Terminal boxes - simplicity with effectiveness When it comes down to it, terminal boxes are really just the simplest version of electrical cabinets. In some exceptional cases, however, they are also used

One In Multiple Out Junction Box: Simplify Power Distribution

One in multiple out junction box is a modular device designed to split a single power input into multiple outputs safely and efficiently. It enables clean and organized electrical distribution within control

3.5mm Audio Switcher, 2 Input 1 Output/1 Input 2 Output ...

Product sellpoints 2 input 1 output: Switch between two audio sources easily. Audio switcher box: Compact and reliable audio routing solution. 3.5mm compatible: Works with standard 3.5mm audio

Contact Us

For more information, pricing, or custom solutions, please contact us:

Website: <https://tooltechnologyapplication.com.pl>

Email: info@tooltechnologyapplication.com.pl

Phone: +49 69 3527 4819

Address: Neue Mainzer Straße 66, 60311 Frankfurt, Germany

This document is for informational purposes only. Specifications subject to change without notice.

