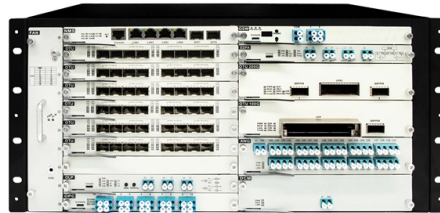


Telecommunication Fiber Optic Chassis



Overview

Fiber chassis are devices that aggregate multiple media converters in a single rack mountable enclosure. Some models offer only a simple centralized power supply, like the unmanaged FMC series, while others offer power redundancy and centralized SNMP or in-band TS-1000 or 802.3ah. CommScope's NG4access optical distribution frame (ODF) platform was built from the ground up to provide superior access to high density fiber terminations. With innovations such as CommScope's access trays, universal adapter packs, cabled modules and MPO modules, installing and maintaining large. Amphenol Network Solutions offers a full line of high-performing and high high-density fiber panels, modules and accessories for your data center, central office or headend. Pre-terminated panels, Patch and Splice and Patch only and AOMs (Advanced Optical Modules) configurations are supported by. A fiber optic system includes a telecommunications chassis defining a front and a rear, a plurality of blades slidably mounted to the chassis, the blades slidable in a direction extending from the front to the rear, and a plurality of fiber optic cassettes removably mounted to each blade. Each. GAO's chassis and accessories are components and equipment used in the field of fiber optics, specifically related to CWDM (Coarse Wavelength Division Multiplexing) and DWDM (Dense Wavelength Division Multiplexing) technologies. Tech by Amphenol leverages its extensive high-speed interconnect portfolio to design and build advanced chassis and input/output (I/O) solutions for mission-critical applications in aerospace, defense, telecommunications, data centers, and other vital industries. Our expertise includes media.

Article Content

Fiber Optic Cables Turned Into Hidden Microphones to Secretly Spy

A covert acoustic eavesdropping attack that transforms standard FTTH telecom fiber cables into passive, undetectable listening devices invisible to RF scanners and immune to ultrasonic

US20240353645A1

A fiber optic system includes a telecommunications chassis defining a front and a rear, a plurality of blades slidably mounted to the chassis, the blades slidable in a direction extending...

papua-new-guinea-vibration-optical-cable-wholesale-manufacturer

24 Companies and suppliers for papua-new-guinea-vibration-optical-cable-wholesale-manufacturer Find wholesalers and contact them directly Leading B2B marketplace Find companies now!

US20020191940A1

A chassis for fiber optics communication equipment, having a housing with first and second opposing sides, and a back panel cooperating with the housing to provide fore-and-aft slots for cassettes

Fiber Distribution Panels | Amphenol Network Solutions

Define your network architecture, choose the panel configuration or modules that fit your requirements, and pick the chassis that best meets your density needs for today and in the future. With our fiber

Modular Fiber Patch Panel Rack Mounted Chassis

Modular Chassis Fiber Patch Panel also named Optical Distribution Frame "ODF" is a frame used to provide cable interconnections between communication facilities, which can integrate fiber splicing,

Telecommunications chassis and module

Furthermore, a chassis may be required to control flame spread should a fire ever be imposed within the chassis. In the case of modules that have fiber optic cable connections, the chassis additionally may

UCS-1200 Rack Mount Chassis | Fiber Equipment from FIBERONE

This flexibility ensures the U-Series chassis fits perfectly into standard telecommunications racks while providing the structural integrity needed for a fully loaded fiber optic chassis. To ensure reliable fiber

Amphenol Network Solutions > C2E

The C2E chassis provides a solution that is dense, modular and tray-based. It is offered as either a dedicated Base-8 solution using the HX8 Base-8 modules for LC to MPO breakout or the

Fiber Optic Networking Equipment for Datacom and Telecom

Products for your IT networking - fiber optic and copper media converters, SFP+, XFP, GBIC fiber optic transceivers, TDM over IP, video transceivers, Ethernet extenders, and more.

US8494329B2

Fiber optic module and chassis Abstract A telecommunications assembly includes a chassis with a top wall, a bottom wall, a front opening, a rear opening, and first and second transverse sidewalls

Get reliable Fiber Chassis from US stock with fast shipping ...

Fiber chassis are devices that aggregate multiple media converters in a single rack mountable enclosure. Some models offer only a simple centralized power supply, like the unmanaged FMC

Chassis & Accessories

GAOTek's fiber optics chassis is a mechanical structure designed to house and organize fiber optic components and cables. It provides protection, organization, and easy access to fiber optic

Chassis OLTs: The Backbone of Scalable Fiber Networks

Among OLT types, chassis OLTs are preferred for large-scale deployments due to their flexibility, modularity, and high performance. This article

Optical Circuit Switch

Enable new AI architectures with the Optical Circuit Switch (OCS) The OCS optimizes data center networks by minimizing electrical switches and optical

Rugged Chassis and I/O | Open.Tech

Open.Tech's chassis and I/O solutions, including media converters, Ethernet switches, and modular I/O systems. Built for aerospace, and defense

NG4-CHASSIS

CommScope's NG4access splice chassis installs on the back side of the NG4access frame below the bottom horizontal trough and holds up to 48 splice trays. The single fusion splice tray has a

Architecting Next-Generation Networks with the Fiberhome AN6000

In recent years, the industry has seen a decisive move toward centralized, high-density OLT chassis that can support multiple generations of PON technologies simultaneously. The

Chassis OLTs: The Backbone of Scalable Fiber Networks

Fiber-optic networks have become the foundation of modern high-speed internet, supporting everything from residential broadband to enterprise

C2E Fiber Distribution Chassis

The C2E chassis lets you mix things up when you're terminating your fiber optic connections. Scale to your needs and deploy as many modules as you require

Optical Distribution Frames (ODF) for Central Office/Headend

An optical distribution frame has the capability to integrate fiber splicing, termination, and cable connections into a single unit. ODFs are essential in various settings, from data centers to

Fiber optic chassis

Item no. FTTH-MODUL-LCOM4 FTTH Module for FTTH-BGT, 12 Port LC with OM4 ceramic adapter

Fiber Networking

ROBOfiber | sku: LFC-CH12-AC LFC-CH12-AC - 12 slot fiber chassis with one AC power supply and fans (for LFC series converters) \$195.00 Add to Cart Compare

NG4-CHASSIS

CommScope's NG4access universal chassis supports configurations up to 576 terminations with LC adapter packs or 288 terminations with SC adapter packs. Each chassis includes 24 access trays

MTP Chassis Panels | Comms Express

Explore the range of MTP Chassis Panels available at Comms Express, Networking Reseller - Free Delivery Available To Buy Online Today.

Handbook Optical fibres, cables and systems

The first ITU-T Handbook related to optical fibres, Optical Fibres for Telecommunications, was published in 1984, and several others have been produced over the years. It is an honour to present you with

UCS-600 Rack-Mount Chassis | Fiber Equipment from FIBERONE

UCS-600 The UCS-600 High-Density Fiber Optic Chassis The UCS-600 rack-mount chassis is a powerhouse solution designed for network professionals who require a robust, high-capacity fiber

Contact Us

For more information, pricing, or custom solutions, please contact us:

Website: <https://tooltechnologyapplication.com.pl>

Email: info@tooltechnologyapplication.com.pl

Phone: +49 69 3527 4819

Address: Neue Mainzer Straße 66, 60311 Frankfurt, Germany

This document is for informational purposes only. Specifications subject to change without notice.

