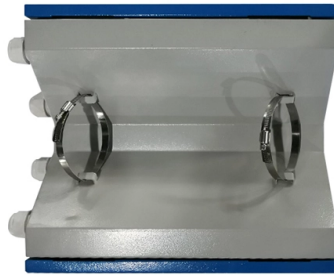


# Sdh single-mode fiber



## Overview

This tutorial provides an overview of SDH/SONET, covering basics, HDLC framing, terminologies, rates, and the SONET STS-1 SDH Frame. SONET (Synchronous Optical Network) and SDH (Synchronous Digital Hierarchy) serve the same purpose: communication over optical fiber links. They are physical layer. Synchronous digital hierarchy (SDH) and synchronous optical network (SONET) refer to a group of fiber-optic transmission rates that can transport digital signals with different capacities. What's SONET/SDH SFP?

SONET/SDH SFP module is compatible with the SONET/SDH and ATM standard. Both SONET and SDH have a basic unit of. SONET/SDH was originally standardized for connecting one fiber system to another at the optical level, to form a single international standard for fiber interconnects between telephone networks of different countries. Today it is a widely deployed, mature technology used in implementing. re. A multiplex hierarchy known as plesiosynchronous dig es. In North America and Japan, however, the.



## Article Content

### NEXT-GEN SONET/SDH reference guide

Although well understood within the telecommunications industry, when discussing next-generation SONET/SDH technologies, it is important to provide a quick refresher of the basic workings of

### SDH Network Topologies: Linear, Ring, Mesh, and Point

Explore different SDH network topologies including point-to-point, linear, ring (two-fiber and four-fiber), and mesh configurations, along with their benefits and

Wiley Online Library | Scientific research articles, journals, books ...

Hier sollte eine Beschreibung angezeigt werden, diese Seite lässt dies jedoch nicht zu.

### AJA FiDO-T 1-Channel 3G-SDI to Single-Mode LC Fiber Transmitter

This AJA FiDO-T 1-Channel 3G-SDI to Single-Mode LC Fiber Transmitter offers unmatched flexibility and cost efficiency for SDI to Fiber conversion, allowing for long cable runs up to 10 km (32,808 ft)

### Everything You Need to Know About Single Mode Fiber

Single mode fiber explained: find out how it works, why it's ideal for high-speed connections, and what sets it apart from other fiber optic cables.

### ITU-T G.65X Single-Mode Optical Fiber

ITU-T defines seven types of communication optical fibers: G.651 to G.657. G.651 is a multi-mode optical fiber, and G.652 to G.657 are single-mode optical fibers. This document describes the optical

### Single Mode vs Multimode Fiber: A Complete

Understand the difference between fibers: single mode offers long-distance, high bandwidth, while multimode suits short runs and lower costs.

### 7 Reasons Why SDH (Synchronous Digital Hierarchy)?

Another cheaper alternative is dense wavelength division multiplexing (DWDM) which uses multiple single-mode optical fibers to transmit digital signals

### Synchronous Digital Hierarchy (SDH)

Synchronous digital hierarchy (SDH) and synchronous optical network (SONET) refer to a group of fiber-optic transmission rates that can transport digital signals with different capacities. This tutorial

stm-1 (155 mbps) SFP, SDH SFP

As SONET/SDH network is designed to carry large volumes of traffic over relatively long distances on fiber optic cabling, SONET/SDH SFP module

## SONET/SDH

SONET/ SDH was originally standardized for connecting one fiber system to another at the optical level, to form a single international standard for fiber interconnects between telephone networks of different

## 5 Types of Single-Mode Fiber: Understanding Your Options

Learn about the different types of single-mode fiber for optimized network performance. Find out which fiber type suits your specific connectivity

## SONET and SDH: A Comprehensive Tutorial

They are physical layer standards designed to ensure reliable transmission of information between a source and destination via optical fiber cables. ANSI

## Single-mode optical fiber

In fiber-optic communication, a single-mode optical fiber, also known as fundamental- or mono-mode, is an optical fiber designed to carry only a single mode of light

## What is Single-mode Fiber Optic and Types?

Fiber optic technology has revolutionized the way we transmit data, providing high-speed and high-capacity communications that are critical in

## SDH SONET 10GBASE SFP+ 1310nm 10km Single-Mode Optical

Fiberinthebox SDH SFP+ transceiver is a high performance, cost effective module for serial optical data communications applications specified for signal rates of 9.95 Gb/s to 11.3 Gb/s. The modules are

## Single-Mode Optical Fiber

Distributed fiber optic sensors are made using optical fibers. The optical fibers used for SHM include single-mode and multi-mode fibers . Single-mode fused silica fibers are often adopted because

## SDH Hierarchy: STM Levels and Bit Rates

This article explains the Synchronous Digital Hierarchy (SDH) and its different levels, including STM-0, STM-1, STM-4, STM-16, STM-64, and STM-256, focusing on

## SONET and SDH: A Comprehensive Tutorial

Explore SONET and SDH, physical layer standards for optical fiber communication. Learn about HDLC framing, key terminologies, rates, and the SONET STS-1 SDH

## SDH SONET 10GBASE SFP+ 1310nm 70km Single-Mode Optical

The modules are designed for single mode fiber and operates at a nominal wavelength of 850/1310/1550 nm. The transmitter section incorporates uncooled directly modulated 1310 nm distributed feedback

What is Synchronous Digital Hierarchy (SDH) and how

What is Synchronous Digital Hierarchy (SDH)? Synchronous Digital Hierarchy (SDH) is a group of fiber optic transmission rates that transport digital

SDH Telecommunications Standard Primer

Because SDH is synchronous, it allows single-stage multiplexing and demultiplex-ing. This single-stage multiplexing eliminates hardware complexity, thus decreasing the cost of equipment while improving

Synchronous digital hierarchy \_ AcademiaLab

The synchronous digital hierarchy —abbreviated as SDH, from English Synchronous Digital Hierarchy — is a set of data transmission protocols. It can be considered as the revolution in transmission

Synchronous Digital Hierarchy

Synchronous Digital Hierarchy (SDH) refers to a fiber-based protocol used for high-speed data transmission, utilizing synchronous optical networking at the physical layer and asynchronous

Single Mode vs Multimode Fiber Optic Cable: A Comprehensive Guide

Conclusion Deciding between single mode and multimode fiber optic cables comes down to understanding your network's specific needs. While single mode fibers offer unparalleled distance

Synchronous Digital Hierarchy (SDH)

Synchronous Digital Hierarchy (SDH) Definition Synchronous digital hierarchy (SDH) and synchronous optical network (SONET) refer to a group of fiber-optic transmission rates that can transport digital

SFP modules - transceivers for 1/2/4G fibre channel

100M Ethernet and SDH/SONET SFP - SFP modules designed for Fast Ethernet and SDH/SONET applications, supporting speeds from 10 Mbps to 100 Mbps

## Contact Us

For more information, pricing, or custom solutions, please contact us:

Website: <https://tooltechnologyapplication.com.pl>

Email: [info@tooltechnologyapplication.com.pl](mailto:info@tooltechnologyapplication.com.pl)

Phone: +49 69 3527 4819

Address: Neue Mainzer Straße 66, 60311 Frankfurt, Germany

This document is for informational purposes only. Specifications subject to change without notice.

