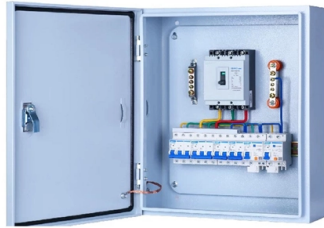


# Imported Industrial Switches OSFP



## Overview

Amphenol Communications Solutions' OSFP series interconnect system has 60 contacts per port with a 0.6 mm contact pitch and eight high speed channels. The Octal Small Form Factor Pluggable (OSFP) Connector System provides up to 224Gbps PAM-4 per lane, single- or dual-port, 8- or 16-lane connectivity. These input/output (I/O) solutions support aggregate data rates up to 1.6Tbps, helping data centers meet AI-driven capacity demands with minimal. Amphenol's ExtremePort™ OSFP connector and cage family delivers a scalable, high-performance interconnect platform designed for next-generation data centers, high-density switch/router systems, and high-speed serial infrastructures. This Amphenol Commercial interconnect. This specification defines the electrical connectors, electrical signals and power supplies, mechanical and thermal requirements of the OSFP Module, connector and cage systems.



## Article Content

### OSFP Connectors & Cable Assemblies

Combined with strong electrical performance and broad system compatibility, TE OSFP connectors and cable assemblies deliver a balanced solution for today's

### OSFP OCTAL SMALL FORM FACTOR PLUGGABLE MODULE

A Type 2 OSFP module provides maximum of 16mm additional length in front than a Type 1 module, and a Type 3 OSFP module provides maximum of 3.6mm additional height in the front than a Type 2

### TE Connectivity

Hier sollte eine Beschreibung angezeigt werden, diese Seite lässt dies jedoch nicht zu.

### OSFP Connectors 2025: Design, QSFP-DD Comparison, and

While QSFP-DD remains common, the OSFP (Octal Small Form-Factor Pluggable) has emerged as a strong contender, designed from the ground up for high-power, high-speed applications such as AI

### Understanding the OSFP Standard: The Open 400G/800G Optical

The OSFP standard marks a pivotal step toward scalable 400G and 800G optical networking, designed from the ground up for AI, cloud, and HPC infrastructures. With open MSA

### OSFP Connector Guide: 400G and 800G Modules,

Explore the OSFP connector series by TE Connectivity, designed for high-density interconnect systems. Discover 200G to 400 Gbps solutions for

### OSFP | High Speed Interconnects | Amphenol

Amphenol's OSFP base series supports high-speed transmission with 60 contacts per port, eight high-speed channels, and a ground-supported SI structure. Optimized for 1U systems, it

### OSFP OCTAL SMALL FORM FACTOR PLUGGABLE MODULE

This specification defines the electrical connectors, electrical signals and power supplies, mechanical and thermal requirements of the OSFP Module, connector and cage systems. The OSFP

### OSFP Series Connectors

Amphenol Communications Solutions' OSFP series interconnect system has 60 contacts per port with a 0.6 mm contact pitch and eight high speed

## High Speed I/O Connectors | Input Output | QSFP

Our global footprint and track record is unparalleled in the industry, with a customer base that includes all major data center, networking, HPC,

### OSFP MSA Rev 5

Abstract: This specification defines the electrical connectors, electrical signals and power supplies, and mechanical and thermal requirements of the OSFP and OSFP-RHS module, connector, and cage

### OSFP1600\_and\_OSFP-XD

OSFP-XD While the OSFP1600 supports future switch silicon with 200 Gb/s electrical lanes, there is broad interest in 1.6 Tb/s optics modules with the 100 Gb/s electrical lane ecosystem. The OSFP-XD

### SFP vs QSFP+ vs OSFP: the Differences and Upgrade

Explore the differences between SFP, QSFP+, and OSFP transceiver modules. Learn when to upgrade your networking infrastructure for optimal

### OSFP Interconnect System

Amphenol Commercial OSFP Interconnect System features 60 contacts per port, with a 0.6mm contact pitch, and eight high-speed channels. The OSFP footprint is optimized for signal

### OSFP CONNECTORS, CAGES & CABLE ASSEMBLIES

By utilizing integrated thermal heatsink technology in the plug, OSFP products provide superior thermal performance and the signal integrity needed to support 400G data rates.

### OSFP Interconnect System

This Amphenol Commercial interconnect system is enhanced for low crosstalk and offers ground commoning for resonance dampening. The module side features an integrated heat sink for

### Form Factors | Juniper Networks

Form factor refers to the physical dimensions and shape of a transceiver. Form factor includes aspects like the size, shape, connector type, and other physical characteristics. It determines how the

### OSFP Series Connectors

Amphenol Communications Solutions" OSFP series connectors are compatible with all mating connectors and cage configurations including single

### Amphenol Commercial OSFP Interconnect System | New Product Brief

Amphenol Commercial OSFP Interconnect System is a high-performance solution for high-speed serial applications, supporting 112G PAM4 per channel for up to 800G aggregate

ExtremePort™ OSFP-XD 112G Connectors | High

EXTREMEPORT™ OSFP-XD 112G INTERCONNECT SYSTEM Amphenol's ExtremePort™ OSFP-XD 112G interconnect system is comprised of

OSFP – Defining a New Standard for High-Speed

Amphenol's OSFP product portfolio offers customers a comprehensive and integrated link solution that features DAC copper cables, AOCs, stacked and

OSFP Connector System

The Octal Small Form Factor Pluggable (OSFP) Connector System provides single- or dual-port, 8- or 16-lane I/O connectivity with DAC, AOC, ACC and optical

OSFP Connectors 2025: Design, QSFP-DD

While QSFP-DD remains common, the OSFP (Octal Small Form-Factor Pluggable) has emerged as a strong contender, designed from the ground up for high-power,

## Contact Us

For more information, pricing, or custom solutions, please contact us:

Website: <https://tooltechnologyapplication.com.pl>

Email: [info@tooltechnologyapplication.com.pl](mailto:info@tooltechnologyapplication.com.pl)

Phone: +49 69 3527 4819

Address: Neue Mainzer Straße 66, 60311 Frankfurt, Germany

This document is for informational purposes only. Specifications subject to change without notice.

