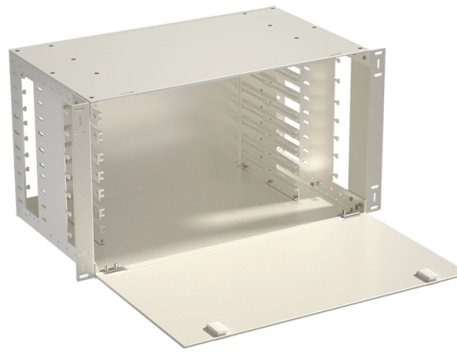


How to insert optical cable into a cap-type optical cable junction box



Overview

Connecting an optical cable, also known as a TOSLINK cable, is straightforward: Carefully align the connector with the port, ensuring the shape matches, and gently push it in until you feel a click. This transmits audio data digitally for pristine sound quality. To check for compatibility, start by. I show you how to insert an digital optical cable. Learn more This is how easy it is to insert an optical cable in a optical port on your TV, sound. Use good lighting, look real carefully for a flat side. They should be outlawed, they're such a PITA. It's so small that when I plugged an optical connector the first time, I did not notice. are the "Doors" still on the AV, covering the optical ports?

If they're missing the cable will most likely not fit securely, as the door folds in 1 direction and forms part of the "tension". Switch. Easiest way is to insert the cable connector into the socket with gentle pressure and rotate it until you feel it line up (it will seem to go in a little further) Then push all the way home - you should feel a positive click when correctly engaged.

Article Content

4 Tips for Connecting an Optical Audio Cable to Your

Optical audio cables also provide far superior audio quality as compared to standard coaxial cables. However, these pieces of equipment are

Best Practices for Optical Cable Junction Box Installation in 2025

Conclusion In conclusion, the installation of optical cable junction boxes in 2024 should embrace best practices to mitigate potential issues. By ensuring proper sealing, implementing effective cable

How to Connect an Optical Cable to Your TV, Soundbar,

Step 3. Plug Your Optical Audio Cable into Your TV Then, simply connect your optical audio cable to your TV's optical output (on the back). Be sure to line up

How to Install an Optical Cable Step by Step

Learn how to install optical cable correctly, from choosing the right fiber type to terminating, cleaning, and testing your connection safely.

How to Install an Optical Drive

Connecting EIDE Cables into the Drive IDE (technically EIDE) optical drives include a 40-pin, 80-wire cable that is much wider and more difficult to insert.

How Do You Insert an Optical Cable: A Step-by-Step Guide

However, for those new to this technology, inserting an optical cable correctly can be a daunting task. In this step-by-step guide, we will walk you through the process, ensuring that you can

How To Use Optical Cable

Connect the cable: Gently insert the LC, SC, or ST connector into the transceiver or optical port on both ends of the cable. For duplex cables, make sure the transmit (TX) and receive

Optical fiber connector

Optical fiber connectors are categorized into single-mode and multimode types based on their distinct characteristics. Industry standards ensure compatibility

Connect the Dots: A Comprehensive Guide to Optical Cable

In an increasingly digital world, quality media experiences hinge on the right connections. One of the most essential connections for audio and video technology is the optical cable. Whether

How To Connect Optical Audio Cable To Stereo Aux

Learn how to easily connect an optical audio cable to your stereo aux input. Enhance your audio experience with this simple step-by-step guide.

Optical cable

Insert the cable properly. The receiver's optical input port should receive the red-lit cable end. Switch optical cables. Your receiver's port may not work with your cable.

How to Plug and Unplug Fiber Optic Connectors

Are you interested in seeing how fiber optic connectors get mechanically plugged into an adapter? This video goes over common types of connectors, their respective adapters, and how to properly ...

How To Plug In An Optical Audio Cable: If either connector is

Connect Optical Soundbar *New LG TV Check if the Optical Output Connector Has a Protective Cap; Find the Optical Input Connection on . 2. If either connector is damaged, you may

How to Plug in an Optical Cable?

Connecting an optical cable, also known as a TOSLINK cable, is straightforward: Carefully align the connector with the port, ensuring the shape matches, and gently push it in until you feel a click.

How to Connect Toslink Cables

How to Connect Toslink Cables Toslink cables, also known as optical audio cables, are a great way to transmit high-quality digital audio between devices like TVs, soundbars, receivers, and gaming

How to Put in an Optical Cable

I show you how to insert an digital optical cable. Doesn't matter if its going into TV, sound bar, etc. Hope this helps. Amazon Daily Deals: [amzn.to/...](https://amzn.to/)

Connecting a Cable to an Optical Port

Remove the dust-proof cap on the port, and insert the cable connector into the port. When you hear a "click" and the cable cannot be pulled out, the connector is secured.

Connecting Your Optical TV Cable to Your Home Theater: A

When it comes to enhancing your home entertainment experience, connecting your optical TV cable to your home theater system is an essential step that can significantly elevate your

How to Plug in an Optical Cable?

How to Plug in an Optical Cable: A Comprehensive Guide Connecting an optical cable, also known as a TOSLINK cable, is straightforward: Carefully align the connector with the port,

Inserting Optical Audio connectors, what's the trick?

This may sound stupid, but since I've never used an optical audio connection until this weekend, (PS3 to AV receiver), I've struggled to figure out how to insert it and remove it.

How to Connect an Optical Cable

This is how easy it is to insert an optical cable in a optical port on your TV, sound bar, receiver, amplifier etc.. ↓ ↓ Amazon links ↓ ↓ LINKFOR 3.5mm to Optica...

How To Install A Optical Audio Cable

Learn how to easily install an optical audio cable for high-quality audio transmission. Enhance your audio setup with this step-by-step guide.

Inserting Optical Audio connectors, what's the trick?

Check to see if the optical cable's connectors still have a cap over them. It's so small that when I plugged an optical connector the first time, I did not notice the tiny semi-transparent cap.

optical audio cable

Easiest way is to insert the cable connector into the socket with gentle pressure and rotate it until you feel it line up (it will seem to go in a little further) Then push all the way home - you

How to Connect an Optical Cable | Home Cinema Guide

Run the optical cable from the TV or cable box to your amplifier or soundbar. Locate the optical audio input on the rear of your home theater system

optical audio cable

:confused:I am trying to connect the optical audio out from my plasma hdtv to the optical audio in on my AV receiver. I have never used optical cables before,, and the connections don't

Contact Us

For more information, pricing, or custom solutions, please contact us:

Website: <https://tooltechnologyapplication.com.pl>

Email: info@tooltechnologyapplication.com.pl

Phone: +49 69 3527 4819

Address: Neue Mainzer Straße 66, 60311 Frankfurt, Germany

This document is for informational purposes only. Specifications subject to change without notice.

