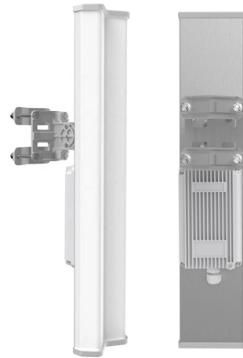


# How long can cables inside cable trays last



## Overview

Lifespan (10-15 years): Aluminum alloy cable trays typically last between 10 to 15 years, depending on the environmental factors. The mechanical and electrical characteristics, tests, certifications, overall quality management, recommendations mentioned in this technical guide only apply to our own cable management ranges and cannot under any circumstances be transposed to silicone, overheating or. The cable tray lifespan directly impacts both the reliability and the maintenance costs of electrical installations. Each material has its own strengths and weaknesses, which maintain spacing or to keep cables in place when the tray is erect the minimum bend radius for cables as they exit the bottom of the cable tray. A rung spacing of 6 to 9 inches (150 to 230 mm) is preferable when the cable tray is used for instrumentation and control applications that require. In this blog, we will delve into essential cable tray maintenance practices that can help you extend the lifespan of your cable tray systems, reduce downtime, and enhance safety. When correctly installed, these systems can provide a rigid supporting structure with a long life span. Cable trays, ladders & channel under normal. The lifespan of cable trays is not only related to the season and the materials used but also significantly influenced by daily maintenance and upkeep. You can follow to periodically maintain and upkeep your cable trays based on your.

## Article Content

Best Practices for Installing Cables in Trays

Conclusion Proper installation of cables in trays requires more than just laying cables. It requires: correct inspection and

Cable Tray Maintenance Best Practices for Longevity

In this blog, we will delve into essential cable tray maintenance practices that can help you extend the lifespan of your cable tray systems, reduce downtime, and enhance safety.

AshwinD24's gists · GitHub

GitHub Gist: star and fork AshwinD24's gists by creating an account on GitHub.

Cable Tray Questions | Cable Tray Institute

This can be accomplished by a separate cable tray system or by a divider within a cable tray. NEC section 318-5 (e) indicates that multiconductor cables rated 600 volts or less are permitted in the

GUIDE CABLE TRAYS TECHNICAL

When fitting cable trays and their accessories, the products are cut on site to create changes of direction, adjust sections, etc. Damage can also occur during handling; as a result, both the

Cable Tray Environmental Factors and Material Selection

Have you ever wondered why some cable trays last for ages, while others seem to fall apart too soon? It often comes down to understanding Cable

Cable Tray Lifespan: An In-Depth Overview of Material

In harsh environments, the cable tray lifespan of hot-dip galvanized trays can range from 10 to 15 years. With proper installation and regular

How long does a cable last? | Prysmian

Have you ever had a client ask: "how long does a cable last?" It is a common question, but the answer is not that simple.

Cable Tray Spacing Standards for Installation and Safety

Proper installation can significantly reduce electromagnetic interference, prevent fire hazards, and improve overall efficiency. This article

Do You Really Need a Cable Tray? Here's How to Decide

However, if you have a large number of cables that need to be routed over long distances or through multiple floors, then a cable tray can help simplify

### Maintenance and Upkeep of Cable Trays

The lifespan of cable trays is not only related to the season and the materials used but also significantly influenced by daily maintenance and upkeep. The following

### Cable Tray Systems: Requirements and Best Practices

Comprehensive guide to cable tray systems requirements: tray types, materials, loading, supports, bonding, routing, and best practices for safe electrical cable management.

### How Far Can Cable Tray Support Span?

Cable trays are essential in electrical infrastructure, offering support and protection for cables. They come in various types and materials, ensuring

### The Complete Guide to Cable Trays | Snake Tray

Learn about the benefits and applications of cable trays, and the specific advantages of using Snake Tray products.

### Cable Tray Maintenance: Tips for Long-lasting Equipment

Any debris or foreign material should be removed from the tray and its supports. A proper cleaning and inspection should be performed at least once a year or more frequently in harsh

### A Guide to Installing and Supporting Electrical Cable Trays

A professional guide to installing electrical cable tray systems per NEC Article 392. Covers support, securing cables, and fill calculations.

### 100+ Essential Questions Answered About Cable Trays:

Discover over 100 expert answers about cable trays, covering key topics like material selection, load capacity, installation methods, and maintenance.

### Cable Tray Service Life Explained: How Long Do They Last?

Understand cable tray service life. Learn factors affecting durability, how to assess lifespan, and typical lifespans for metal, non-metal, and composite trays.

### FAQ: Electrical cables' life expectancy | Eland Cables

Answering the frequently asked question: what is the life expectancy of an electrical cable. There are many different environmental and operational conditions which are likely to influence the longevity of

Why do cable trays age? How should we handle it?

When we use cable trays, if we cannot make timely judgments when faults occur, it may cause losses. Therefore, we need to regularly maintain them

### Cable Trays Maintenance: Tips For Long-Lasting

Regular maintenance of the cable tray can help you in managing, monitoring, and securing the large volume of cable wires and your cable tray as

Beama Best Practice Guide | Maintenance Of Cable Trays | CMW

Although inactive or dead cables may be left inside a tray or ladder system, it is good practice to remove these cables to free up future cable carrying capacity & to improve ventilation in the remaining system.

### Ampacity of Power Cables Installed in Cable Trays

Cable ampacity, the maximum current-carrying capacity, is a critical factor in the design and operation of power cable systems. Cables installed in trays have

Cable Tray Technical Guide A practical guide to product selection and ...

Cable tray is considered to be a system. It must provide continuous support for cables, and the electrical continuity of the cable tray system must be maintained.

Cable Tray Technical Guide A practical guide to product selection and ...

**SOLID-BOTTOM CABLE TRAY** Providing additional cable protection, solid-bottom cable tray is sometimes preferred to support and protect numerous small instrumentation and control cables.

### Selecting Cable Trays: A Complete Guide for Cable

How to Choose the Right Cable Trays for Your Project Selecting cable trays can feel overwhelming, especially with so many options available. But don't

## Contact Us

For more information, pricing, or custom solutions, please contact us:

Website: <https://tooltechnologyapplication.com.pl>

Email: [info@tooltechnologyapplication.com.pl](mailto:info@tooltechnologyapplication.com.pl)

Phone: +49 69 3527 4819

Address: Neue Mainzer Straße 66, 60311 Frankfurt, Germany

This document is for informational purposes only. Specifications subject to change without notice.

