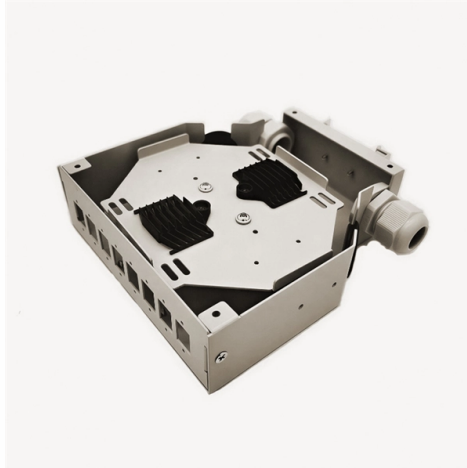


House electrical distribution box fire



Overview

This guide will walk you through the top causes of fuse box fires, early warning signs, and practical upgrades that could save your property—and your life. Your fuse box—technically known as a consumer unit—is the central nervous system of your home's electrical setup. In 2025, the National Fire Protection Association (NFPA) reports that electrical distribution systems are still a leading cause of residential fires, contributing to over 44,000 home fires annually across the UK and Ireland. Many of these stem from outdated or poorly maintained fuse boxes (source). NFPA actively supports National Electrical Safety Month, an annual campaign sponsored by Electrical Safety Foundation International (ESFI), which raises awareness of potential home electrical hazards, the importance of electrical fire safety, and ensures the safety of electrical and non-electrical. The main reasons for the fire in the electric meter box are as follows: Electricity overload: When the capacity of the meter box is insufficient or high-power electrical appliances are used, or multiple electrical appliances are turned on at the same time, the equipment is prone to overload. Electrical fires are typically started by faulty wiring, overloaded circuits, malfunctioning appliances, or improper use of extension cords and space heaters. In this article, we will explore the dangers of a loose.



Article Content

Electrical Home Fire Safety | NFPA

Don't take the power of electricity and its potential for fire-related hazards for granted. Here is some important safety information.

Is My Electrical Panel a Fire Hazard?

Electrical panels become fire hazards when they can't longer handle the voltage flowing through them. Age, damage, corrosion, or faulty installation can compromise the effectiveness of

ECU Fire Protection System for Distribution Boards

The ECU fire protection system was designed to meet new regulations, protecting domestic units and distribution boards from potential fire damage.

Electrical Distribution Panels & Circuit Breaker Fires

This Zinsco combination Meter Socket / Electrical Distribution Panel just about burned my friend's house down. It melted the power buses, arced through the

The Truth About Electrical Panel Fires: Are You at Risk?

Electrical panel fires pose a serious risk stemming from outdated systems, faulty wiring, and overloaded circuits.

Can a loose electrical box connection cause a fire?

In this article, we will explore the dangers of a loose electrical box connection, how it can lead to a fire, and the importance of regular electrical inspections and

What Causes Electrical Fires? 7 Common Home Hazards

Discover what causes electrical fires and how to prevent them. Learn 7 hazards that may be putting your home and safety at risk.

Prevent Fuse Box Fires | Meteor Electrical Guide 2025

If your home still has a plastic fuse box or shows signs of wear, now is the time to act. This guide will walk you through the top causes of fuse box fires, early warning signs, and practical upgrades that

HOME ELECTRICAL FIRES

Home electrical fires can start in wiring, electrical distribution systems, and lighting equipment, as well as in any equipment powered by electricity such as cooking, heating, office and entertainment

Fire Safety Advice: Electrical Fire Prevention at Home

Read our list of fire safety dos & don'ts to help prevent electrical fires in the home, featuring advice from our in-house experts.

Is Your Old Electrical Box a Fire Hazard?

Concerned about your vintage electrical panel? Learn to identify fire risks, spot signs of failure, and understand replacement criteria.

Electrical fires: 5 common causes

5 common causes of electrical fires Electrical fires caused an estimated 295 deaths, 900 injuries and over \$1.2 billion in property loss in one

9 Common Electrical Fire Causes

Learn the 9 most common electrical fire causes, warning signs, and prevention tips to keep your home and family safe from fire risks.

Electrical box caught on fire

A sub panel caught on fire just in the garage area. Do I need to rewire the whole house or can I just get a big junction box and splice all branch circuits and run it to my new electrical panel ?

Understanding Distribution Boxes: A Comprehensive Guide

A distribution box, also known as a power distribution box or electrical distribution box, is used to distribute electrical power safely to multiple

Fire Prevention Guidelines for Electric Meter Boxes

Fire prevention of electric meter boxes is an important part of ensuring the safety of households and residential buildings. The following is a detailed fire prevention

DB BOX (Electrical Distribution Box): Everything You

Conclusion Selecting the right Electrical Distribution Box is vital for ensuring the safety and efficiency of any electrical system. Whether your project

Why do meter box and small power distribution units frequently catch

Aging equipment: Aged, worn or damaged meter box and small power distribution unit components, such as outlets, switches, wires and connectors, can become unreliable, prone to failure and cause

Electrical fires: 5 common causes

Most electrical fires are caused by faulty electrical outlets and old, outdated appliances. Other fires are started by faults in appliance cords,

The reason for the fire in the electric meter box

In summary, in order to prevent the electric meter box from catching fire, it is necessary to regularly inspect and maintain the electric meter box to ensure that it is in good working condition and comply

What Causes A Breaker Box To Catch Fire?

Breaker boxes, or service entrances, are how electricity enters and is routed through your home. One large cable enters the box, and power is

HOME FIRES CAUSED BY ELECTRICAL DISTRIBUTION AND

Home Fires Involving Electrical Distribution and Lighting Equipment In 2015–2019, US fire departments responded to an estimated average of 32,620 fires in homes that involved electrical distribution and

Home Fires Caused by Electrical Distribution and Lighting Equipment

Home fires involving electrical distribution and lighting equipment caused an estimated average of 430 civilian deaths and 1,070 civilian injuries per year in 2015–2019, as well as an

Fire Prevention Guidelines for Electric Meter Boxes

Regularly check the operation status of the distribution box and electricity meter box in the community, and promptly handle any problems found. 3□ Fire response

The Importance of Distribution Boxes in Electrical Systems

Why is a Distribution Box Important? A distribution box is necessary for several reasons: Safety: The miniature circuit breakers in the distribution box

Contact Us

For more information, pricing, or custom solutions, please contact us:

Website: <https://tooltechnologyapplication.com.pl>

Email: info@tooltechnologyapplication.com.pl

Phone: +49 69 3527 4819

Address: Neue Mainzer Straße 66, 60311 Frankfurt, Germany

This document is for informational purposes only. Specifications subject to change without notice.

