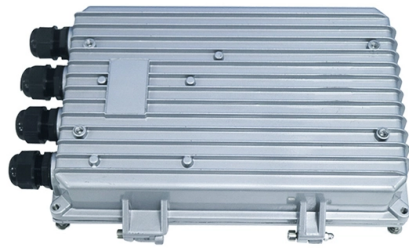


# Horizontal deviation of cable tray support installation



## Overview

The cable tray vendors should be installed firmly and horizontally and vertically. The left and right deviation of the support walking horizontally along the cable rack should be below 10mm, and the height deviation should be below 5mm. Horizontal deviation:  $\leq 2\text{mm}$  per meter. Use dedicated splice plates and. This publication is intended as a practical guide for the proper and safe\* installation of cable ladder systems, cable tray systems, channel support systems and associated supports. One of the most recognized frameworks globally is the IEC standard for. en completely installed, without damage either to conductors or structural system use maintain spacing or to keep cables in place when the tray is ect the minimum bend ra-dius for cables as they exit the bottom of the cable tray. With our many years of experience, we are one of the leading manufacturers in this field.



## Article Content

### Horizontal Cable Tray System Installation | Telecom System

Verify that the installed cable tray allows for 20% expansion of the horizontal cabling system. Verify that the cable tray is supported on 1500-mm (5 ft) centers unless designed for greater lengths as per

### GENERAL INFORMATION

Cable trays or raceways often provide a convenient, safe and efficient method of fiber optic cable installation. Trays can be installed in ceilings, below floors and in riser shafts. When installing fiber

### Technical Guidelines for Cable Tray Installation and

Cable tray installation must comply with specific technical standards to ensure electrical safety, system reliability, and long-term maintainability. This document

### A Guide to Installing and Supporting Electrical Cable Trays

This guide covers the critical steps, from selecting the right electrical cable tray and performing accurate cable fill calculations to managing a safe cable pull through

### Method Statement installation of Cable Trays and Ladders

This method statement covers the site installation of the cable tray & ladders and the requirements of checks to be carried out.

### Safely Installing, Maintaining and Inspecting Cable Trays

Cable trays support cables across open spans in the same way that roadway bridges support traffic. Cable trays can provide a safe component of a power, low voltage control, data or

### Precautions for Cable Tray Installation

Cable Tray Installation Guide The correct installation of cable trays is crucial for establishing a reliable and efficient cable system. It ensures that cables are

### Technical Specification for Cable tray installation and cable laying work

1. Scope :- This specification covers the following major activities; - Fabrication and installation of Mild Steel (MS) support structure for Galvanized Iron (GI) Cable tray. - Installation of perforated GI Cable

### Cable Tray Installation and Cable Handling Method

3. Cable Tray Support Locations Cable tray supports should be strategically positioned so that connectors between horizontal straight sections of the tray fall

### Beama Best Practice Guide | Installation Of The System | Cable ...

2.2 Structural characteristics When considering the installation of the cable supports system it is imperative to avoid the cutting or drilling of structural building members without the approval of the

Best Practice Guide to Cable Ladder and Cable Tray

Cable ladder and cable tray systems The following recommendations are intended to be a practical guide to ensure the safe and proper installation of

#### INSTALLATION GUIDE

If the span between the tray supports is less than the length of the straight section (Diagram D.7.B), place the tray across both supports so that the ends are cantilevered.

IEC Standard for Cable Tray: Complete Technical Guide

Trays should be installed with correct support spacing, using compatible accessories. Overloading must be avoided, and all bends or junctions

Best Practice Guide to Cable Ladder and Cable Tray Systems

Introduction This publication is intended as a practical guide for the proper and safe\* installation of cable ladder systems, cable tray systems, channel support systems and associated supports. Cable ladder

Can you install Cable Tray Support Brackets both

They are designed to bear the weight of cable trays, which carry heavy loads of cables. These brackets come in various types including wall-mounted, ceiling

Mastering Cable Tray Installation | Step-by-Step Guide for a Seamless ...

Conclusion Mastering cable tray installation is crucial for creating a safe, organised, and efficient cable management system. By following this step-by-step guide, you can ensure a seamless

Cable Tray Technical Guide A practical guide to product selection and ...

A practical guide to product selection and installation This guide for engineers and installers has been developed by ABB as a practical reference regarding cable tray characteristics, installation, and

Preventing Cable Tray Deformation During Installation

Learn how to prevent cable tray deformation during installation. Discover practical measures to ensure proper installation, enhance cable tray

Instrumentation Cable Tray Installation Checklist and

Step-by-step instrumentation cable tray installation guide with safety tips, standards, inspections, and downloadable Excel checklist.

## Fiber Cable Tray System

Installation and maintenance of cable tray wiring systems should be performed by a minimum of two qualified technicians. For the purposes of this guideline, a qualified technician is one who is familiar

IEEE 525-2007\_accepted

IEEE-SA Standards Board Abstract: The design, installation, and protection of wire and cable systems in substations are covered in this guide, with the objective of minimizing cable failures and their

## Cable Tray

Any horizontal and/or vertical change of direction can be realized on site with the fittings and the connectors (from page). All changes of direction must be

Guide to cable support systems

When installing cable support systems, for example on the UniBase universal stand, make sure that the support surface corresponds to the full width of the installed system.

Standard for installation of cable trays-Shandong Hongfeng Electric ...

1.The cable tray vendors should be installed firmly and horizontally and vertically. The left and right deviation of the support walking horizontally along the cable rack should be below-10mm,

Installation of Cable Tray, Trunking And Accessories

2. Purpose This method statement for the Installation of Cable Tray, Trunking, and Accessories shows and explains the procedure must be followed to install the cable tray and

Cable Tray Installation Guidelines | PDF | Galvanization

This document provides details on installing cable trays and their support systems. It includes diagrams showing how to mount cable trays on walls using pre

## Contact Us

For more information, pricing, or custom solutions, please contact us:

Website: <https://tooltechnologyapplication.com.pl>

Email: [info@tooltechnologyapplication.com.pl](mailto:info@tooltechnologyapplication.com.pl)

Phone: +49 69 3527 4819

Address: Neue Mainzer Straße 66, 60311 Frankfurt, Germany

This document is for informational purposes only. Specifications subject to change without notice.

