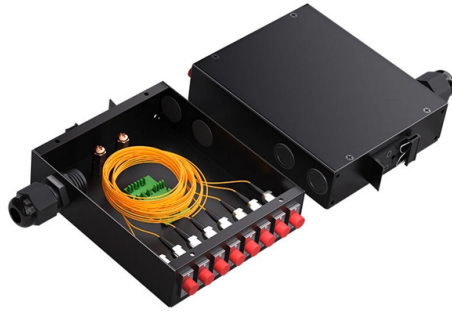


Horizontal cable tray orientation



Overview

Verify that the horizontal cable tray is located 15 cm (6 in.) of clear vertical space from conduits, wires, and cables. Placing channel cable trays upside down is also desirable, I have seen some constructions using this positioning, mainly for small size ones. 07-20-2016 09-10-2016. us-trations without notice. All illustrations, descriptions and technical information included in this document are provided as indications and can cable trays are equivalent. The mechanical and electrical characteristics, tests, certifications, overall quality management, recommendations mentioned. maintain spacing or to keep cables in place when the tray is ect the minimum bend ra-dius for cables as they exit the bottom of the cable tray. A rung spacing of 6 to 9 inches (150 to 230 mm) is preferable when the cable tray cont d for instrumentation and control applications that require. In order to automatically create a whole cable tray run, however, we need both the straight segment cable tray elements and also the fittings to connect them with each other, elbows to turn corners and branching elements to represent junctions. This is harder to implement for cable trays than for. Elbow joint RVS is pushed inside the cable tray and attached with the included screw set. Need more information?

In industrial settings, electrical and instrumentation (E&I) cable trays or bridge racks play a critical role in organizing and supporting power, control, and signal cables across facilities. An effective layout ensures safety, minimizes interference, reduces maintenance time, and keeps the overall.

Article Content

Cable Tray Orientation and Fittings

To connect a horizontal cable tray segment with a vertical one requires the latter to be precisely oriented so that the elbow will line up properly with both. This is

How to make a 0-90° vertical angle for cable trays?

Elbow joint RVS is pushed inside the cable tray and attached with the included screw set. Elbow joint RVS can be used to change a cable tray's horizontal orientation

How to create vertical cable tray in Revit

How to create a vertical cable tray in Revit to match the one shown in the image: This can be done with the free Revit MEP Fabrication extension. Use

Solved: Cable Tray Orientation

Good day, Our electrical users have the following issue: They have been requested to draw cable trays to mount in the vertical and not horizontal as usual. Revit does not seem to have

Complete cable tray manual for electrical engineers and

Complete cable tray manual for electrical engineers and designers (on photo: power cable management ladder tray systems assembled aluminum

Wall mounted Cable Tray

Hey everyone need some help with the below, I've been given a wall-mounted cable tray to extend, but I'm running into an issue. When I try to draw a

Core Principles for Electrical and Instrumentation Cable

2. Minimum Spacing and Segregation Spacing Standards: Electrical (power) and instrumentation (signal/control) cable trays should maintain a minimum vertical

Revit Recess: Vertical Cable Tray Orientation

Vertical Cable Tray Orientation A Revit Electrical discipline wish that has been on the list for quite a few years, is to draw vertically oriented cable trays. Natively, this is

Mastering Cable Tray Installation | Step-by-Step Guide for a Seamless ...

Learn how to install cable trays correctly. Get the ultimate step-by-step guide on setting up a seamless and reliable cable management system.

Horizontal Cable Tray System Installation | Telecom System

Verify that the horizontal cable tray have a minimum of 8 cm (3 in.) of clear vertical space from conduits, wires, and cables. Verify that the inside of a horizontal cable tray is free of burrs, sharp edges, or

Rotate horizontal cable tray sections

Rotate horizontal cable tray sections Allows to rotate the cable trays in a horizontal section, so we can place horizontal cable trays with the bottom facing a wall.

Best Practices for Installing Cables in Trays

Learn the best practices for installing cables in trays. This guide covers essential steps, technical requirements, and key details for efficient cable

How to Install Cable Tray: A Comprehensive Guide to Different Cable ...

Welcome to our step-by-step guide on installing cable trays! In this video, we'll explore the different types of cable trays available and provide detailed instructions for their installation.

GUIDE CABLE TRAYS TECHNICAL

NEMA VE 1-2017 Specifies requirements for metal cable trays and associated fittings designed for use in accordance with the rules of Canadian Electrical Code, Part I and the National Electrical Code®

Core Principles for Electrical and Instrumentation Cable

Spacing Standards: Electrical (power) and instrumentation (signal/control) cable trays should maintain a minimum vertical and horizontal distance. Industry

Rotate horizontal cable tray sections

Allows to rotate the cable trays in a horizontal section, so we can place horizontal cable trays with the bottom facing a wall. Placing channel cable trays upside

Cable Tray Questions | Cable Tray Institute

That is, each cable tray rung would point in a vertical direction as opposed to the usual horizontal direction. The local electrical inspector has stated that he has no issues with this as long as the

Cable Tray Technical Guide A practical guide to product selection and ...

In designing supports for a cable tray system, consideration should be given to the loads associated with future cable additions and any additional loading that may be applied to the cable tray system (e.g.,

GENERAL INFORMATION

Cable trays or raceways often provide a convenient, safe and efficient method of fiber optic cable installation. Trays can be installed in ceilings, below floors and in riser shafts. When installing fiber

Cable Tray Spacing Standards for Installation and Safety

Discover the essential cable tray spacing requirements for safe and efficient installation. Learn key standards, horizontal and vertical spacing, and more.

Best Practice Guide to Cable Ladder and Cable Tray Systems

This guide covers cable ladder systems, cable tray systems, channel support systems and associated supports intended for the support and accommodation of cables and possibly other electrical

Best practice guide to cable ladder and cable tray

Cable ladder and cable tray systems The following recommendations are intended to be a practical guide to ensure the safe and proper installation of

Cable Tray Spacing Standards for Installation and Safety

Key Factors Impacting Cable Tray Spacing Understanding cable tray spacing is key to meeting safety regulations and maintaining system

CABLE TRAY SYSTEMS GUIDE

Some applications may require the cable tray to support the weight of a single, dead object in addition to the cable loads. Specifications typically require this to be applied at the midpoint of the span between

Modeling cable tray horizontally

Modeling cable tray horizontally Model a cable tray horizontally on a wall in Revit - Exercise Open the Small Medical Center-Cable Tray Horizontal.rvt project. You

FAQ | Cable Tray Institute

Question: We have a customer who would like to install the majority of cable tray in his new industrial facility in what I call an "Edge-Wise" orientation. That is, each cable tray rung would point in a vertical

FAQ | Cable Tray Institute

Cable Tray System FAQs National Electrical Code Question: We have a customer who would like to install the majority of cable tray in his new industrial facility in what I call an "Edge-Wise" orientation.

Contact Us

For more information, pricing, or custom solutions, please contact us:

Website: <https://tooltechnologyapplication.com.pl>

Email: info@tooltechnologyapplication.com.pl

Phone: +49 69 3527 4819

Address: Neue Mainzer Straße 66, 60311 Frankfurt, Germany

This document is for informational purposes only. Specifications subject to change without notice.

