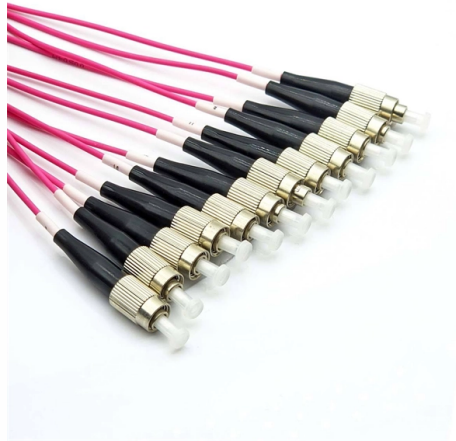


# Control Distribution Box Control Box



## Overview

Distribution Box: Handles main supply voltage (220V–690V) with current ranging from tens to hundreds of amps. Available in various IP-rated enclosures (IP54, IP65, IP67) for dustproof, waterproof, and outdoor use. Prevents corrosion and ensures reliability in harsh environments. Located near machinery, they provide centralized control for starting, stopping, adjusting, and monitoring. Typical components, such as switches, buttons, and indicator lights, enable easy operation and display. Atexdelvalle offers world-class explosion-protected solutions guaranteeing highest quality and performance with no compromise. Manufacture custom made Local Control Stations & Distribution Boxes, local control panel boards and stations, explosion protected control units, distribution. What's the Difference Between an Industrial Distribution Box and a Control Cabinet?

In factories and engineering projects, people often misunderstand: Despite both being metal enclosures containing electrical equipment, their functions, wiring structures, and internal components are completely. These lightweight Ex d control boxes from R. STAHL are. Industrial electrical control boxes are vital in industries where power distribution control is necessary (factories and data centers).

## Article Content

Electrical Control Panels & Distribution Boxes: Sizes,

This guide explores control panels, electrical boxes, breaker panels, bus bars, junction boxes, and custom enclosures to help you understand their

Distribution Boards

Distribution boards, often referred to as electrical panels or breaker boxes, serve as the nerve center of any electrical system. Here we explore the crucial parts of a distribution board and gain insights into

Distribution Box Guide: Types, Components & Solutions

The distribution box (DB box) helps safely and efficiently distribute electrical power. Today, electrical systems are essential for homes and

What is a Distribution Box? – A Comprehensive Guide

A distribution box organizes and controls power flow, ensuring safety and efficiency in electrical systems.

Electrical Distribution Boxes for Power Distribution

From decentralized energy, signal and data distribution to distribution boxes for smart buildings, we offer the right solution. We mount any electronics in the

Distribution Box vs Control Cabinet: Key Differences

Understand the difference between an industrial distribution box and a control cabinet. Learn their functions, components, applications, wiring structures,

Difference Between Control Box, Control

Summary: Control boxes and cabinets handle equipment control and monitoring, while distribution cabinets and boxes focus on power distribution and

Understanding Distribution Boxes: Your Guide to Power

Weatherproof Distribution Boxes These serve specific outdoor purposes, with rain, dust, and extreme temperatures sealed shut, protecting any

Distribution Boxes: Types and Functions

Learn what an electrical distribution box (DB/distribution board) is, its main components (MCB/RCCB/RCBO, SPD, busbar) and common types.

What Is a Control Box? Functions, Types & Uses

Discover what a control box is, how it works, key components, types, and design tips for industrial, commercial, and residential use.

Cost-effective control boxes with Ex d type of protection

These lightweight Ex d control boxes from R. STAHL are perfect for installing customised control systems and control boxes in hazardous areas without the

Ex Local Control Stations & Distribution Boxes

Atex control stations, explosion protected control units and distribution boxes made stainless steel maritime grade AISI 316L or AISI 304L. Atex Delvalle provides a

What Is an Electrical Control Box and Its Uses?

An electrical control box works as a central point for managing and distributing electrical power. When a piece of equipment is powered on, the electricity flows into the control box, where it is

Control and distribution boxes made of stainless steel Series 8150

R. STAHL Series 8150 control and distribution boxes are made of brush-finished stainless steel (1.4301, AISI 304 or 1.4404, AISI 316L) and are extremely robust: High-quality seal materials make them

Understanding Distribution Boxes:A Comprehensive Guide

A distribution boxes is an essential device that manages the safe and efficient flow of electrical power throughout different areas of a building or facility.

Explore Power Distribution Box Types and Functions

Electrical distribution boxes are used in commercial and residential buildings and are part of the electrical system, also known as switchboards. It

What Is The Internal Structure Of The Power Distribution

What is the internal structure of the power distribution box and distribution cabinet? The most detailed explanation, learning collection essential!

Comprehensive Understanding of Distribution Box

Using a distribution box that meets safety rules gives peace of mind. Always pick one with proper certifications for your area. Energy efficiency and control In 2025, saving energy is very important. A

The Complete Guide to Distribution Box: Installation, Types & More

The primary purpose of a distribution box is to provide a safe and organized way to control electrical circuits. When an electrical fault occurs, such as an overload or short circuit, the protective

Distribution Box vs Control Box vs Junction Box: Key Differences and ...

Learn the differences between distribution boxes, control boxes, and junction boxes. Discover their functions, applications, and how E-abel provides customized electrical enclosure

### Power Distribution Boxes Explained Simply

Where Power Distribution Boxes Are Used Power distribution boxes are essential in many settings, from homes to hospitals. Here's a look at some

The difference of Distribution box,distribution cabinet

Difference between control box and distribution box The control box is suitable for factories, mines, enterprises, shopping malls, hotels, schools, airports, ports,

### Distribution Boxes Explained: Types, Functions, and

A distribution boxes is an essential device that safely and efficiently distributes electrical power to different areas within a building or facility. It is

### What is an Electrical Distribution Box? A

An electrical distribution box is often called the control hub of a building's electrical system, and for good reason. It's where power from the main

### Control Power Distribution Box: The Core Hub of the

In the modern power system, the control power distribution box is a key device integrating control and power distribution functions, playing an indispensable role

### A Comprehensive Guide To Control Box

A control box is an enclosure for housing electrical components for controlling and directing the machinery or device. It helps to protect all the

### Power Distribution Boxes Explained Simply

A power distribution box helps control where electricity goes and keeps everything running safely. It protects your system from overloads, makes

### What is a Control Box

i) Electrical Control Boxes: This control box controls electrical power distribution. It usually contains items such as circuit breakers, switches, and

## Contact Us

For more information, pricing, or custom solutions, please contact us:

Website: <https://tooltechnologyapplication.com.pl>

Email: [info@tooltechnologyapplication.com.pl](mailto:info@tooltechnologyapplication.com.pl)

Phone: +49 69 3527 4819

Address: Neue Mainzer Straße 66, 60311 Frankfurt, Germany

This document is for informational purposes only. Specifications subject to change without notice.

