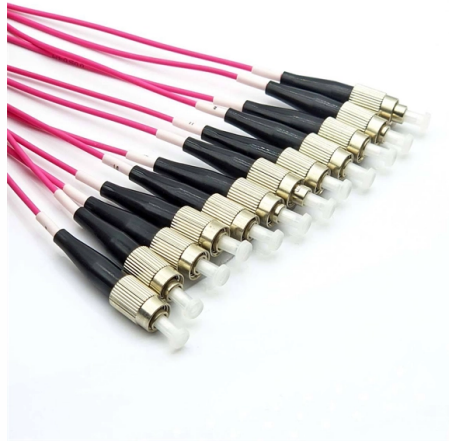


Bending-resistant fiber optic cable ftth



Overview

Carrier-grade FTTH/FTTP drop cable for last-mile connections to homes and businesses. 657 bend-insensitive fiber (≥ 20 mm install radius) with FRP or steel strength members, optional figure-8 self-supporting messenger, and LSZH/FR-PVC/PE sheaths for indoor, duct, or. But in fiber optic projects—especially for FTTH or high-density indoor deployments—the difference can determine whether your network runs flawlessly or fails under tight turns and duct pressure. In this post, we'll break down the differences, applications, cost considerations, and buyer. Enter bend-insensitive fiber (BIF)—a revolutionary design that minimizes loss even in tight bends, transforming how fiber is deployed in high-density, space-constrained environments. This guide explores the science behind bend-insensitive fiber, its key types (single-mode and multimode). These kinds of fibers are also known as Bend-Insensitive (BI) or Reduced-Bend-Insensitive (RBI) fiber cables. Corning (The Gold Standard) Corning literally invented low-loss optical fiber. Their ClearCurve® series is the benchmark for the industry.



Article Content

Fiber Termination Box 2025 Guide for IP65 and IP68

IP65-rated optical distribution terminals work well for outdoor telecom cabinets, base stations, and public communication devices exposed to rain or

Bend-Insensitive Fiber: Types, Benefits & Applications

Whether you're designing a data center, deploying FTTH networks, or upgrading industrial cabling, understanding BIF is critical for building resilient, low-maintenance fiber infrastructure.

G.657.A2 Bend-Insensitive Single-Mode Optical Fiber

Explore G.657.A2 bend-insensitive single-mode optical fiber for FTTH, dense indoor routing, compact terminal boxes, and drone fiber or FPV tether systems. Learn key specs, bend performance,

Fiber Optic Drop Cable: An Ultimate Guide for 2024

Fiber optic drop cables are the critical link between the main fiber optic network and individual buildings or residences. They deliver the high bandwidth

Fiber Optic Cable vs Patch Cord vs Pigtail – Complete

When you build or upgrade a fiber network, the same four words pop up everywhere— fiber optic (bare fiber), pigtail, patch cord, optical cable. They're

2-Core Armored Fiber Optic Drop Cable – FTTH, Outdoor, Bend

This 2-core armored fiber optic drop cable is engineered for FTTH (Fiber to the Home) deployments, featuring bend-resistant G.657A2 fiber and a corrugated steel armored jacket for superior outdoor

FTTH Drop Cable | Indoor & Outdoor Fiber Optic Drop

Secure your network's last mile with our professional-grade FTTH Drop Cables. Featuring a flat, easy-strip design and G.657 bend-insensitive fiber, these cables

4-Core Single mode Fiber Optic Cable

4-Core Single mode Fiber Optic Cable also called 4-core Optical fiber cable, is a type of communications optic cable which has the same transmission speed as

Fiber Optic & Cable Standards Guide | FiberMania

Fiber optic networks are built on well-defined standards that ensure quality, performance, and interoperability. This article explains eight of the most

G.657.A1 vs G.657.B3: Which Bend-Insensitive Fiber Is

Compare G.657.A1 and G.657.B3 fiber types in terms of bend radius, compatibility, and real-world usage. Make the right choice for FTTH and indoor

Optical Distribution Frame (ODF) in Telecom: Types & Uses

An Optical Distribution Frame (ODF) is a specialized enclosure designed to manage, connect, protect, and distribute fiber optic cables in telecom and data networks. Think of it as a

ETS Fiber Optic Distribution Box 2 Core

ETS Fiber Optic Distribution Box 2 Core – IP65 Waterproof, UV Resistant, FTTH, FTTx, Wall/Pole Mountable, Industrial Networks, Fusion Splicing, SC/LC/FC Adapters, Cable Management

IP68 Fiber Distribution Box for FTTA & FTTH Reliability

Introduction As global telecom networks transition to 5G and fiber-to-the-home (FTTH) infrastructure, the demand for reliable outdoor connectivity has never been higher. Whether in dense

How to Identify & Prevent Optical Fiber Cable Damage

Learn how to detect and repair damaged fiber optic cables. Visual checks, OTDR testing, IEC compliance, and waterproof maintenance tips for

Best Indoor Butterfly GJXH FTTH Drop Fiber Optic

Explore the details, specifications and video of our Indoor Butterfly GJXH FTTH Fiber Optic Cable, and order high-quality Indoor Butterfly GJXH FTTH Fiber Optic

Flat FTTH Bend Insensitive Fiber Optic Cable

Datasheet and is suitable for indoor applications. The indoor fiber construction comprises of two or four colored optical fibers, 2 parallel GSW (Galvanized el Wire) strength members and LSZH Jacket.

Choosing the Right FTTH Drop Cable: A Guide for Tier 3 ISPs

Choosing the wrong cable can lead to high maintenance costs, frequent signal drops, and dissatisfied customers. In this comprehensive guide, we will break down the essential components of an FTTH

G.657A2 Fiber Explained – The Best Choice for FTTH and Indoor Fiber ...

G.657A2 optical fiber is an ideal solution for modern FTTH and indoor fiber optic installations. Its excellent bend resistance helps reduce installation difficulty and improve long-term network

Bend-Insensitive Fiber Patch Cords Explained: Minimum

A bend insensitive fiber optic cable is designed for tight spaces, FTTx networks, and data centers, keeping performance stable even in sharp turns.

Bend Insensitive Fibers and Their Applications

These qualities of low attenuation and bend resistance mean they are ideal for Fiber-to-the-Home (FTTH) deployments, for high-speed and more reliable connectivity. HFCL offers a range

FTTH Butterfly Optic Cables: Types, Specs & Installation Guide

Learn how FTTH butterfly optic cables work, when to choose G.657.A1 vs A2, indoor vs self-supporting variants, and what specs to demand from suppliers.

Fiber Optic Drop Cable | FTTH G.657 Bend-Insensitive

Carrier-grade FTTH/FTTP drop cable for last-mile connections to homes and businesses. Uses G.657 bend-insensitive fiber (≥ 20 mm install radius) with FRP

2026 Top 8 Optical Fiber Cable Manufacturer in USA

2. Top 8 Optical Fiber Cable Manufacturer Corning Inc. - The Innovation Pioneer Since developing the first low-loss optical fiber in 1970,

Outdoor 2-Core Fiber Optic FTTH Drop Cable-1000m

Product Description This FTTH Drop Cable is used in high speed and broadband telecommunication applications. It is suitable for both indoor and outdoor

Top 3 Bend-Insensitive Fiber Patch Cable Brands for

In the world of FTTH (fiber to the Home) deployments, the biggest enemy isn't signal attenuation over distance—it's The Corner. When fiber enters a residential

Contact Us

For more information, pricing, or custom solutions, please contact us:

Website: <https://tooltechnologyapplication.com.pl>

Email: info@tooltechnologyapplication.com.pl

Phone: +49 69 3527 4819

Address: Neue Mainzer Straße 66, 60311 Frankfurt, Germany

This document is for informational purposes only. Specifications subject to change without notice.

