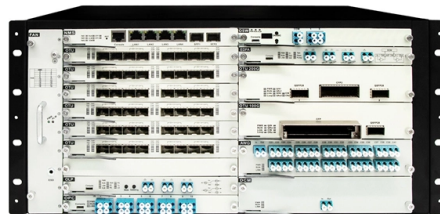


Basis for sealing cable holes in distribution boxes



Overview

Effective techniques for sealing cable entry points involve using high-quality sealants, employing grommets or cable glands, and ensuring a clean and secure installation. It's most innovative and flexible cable and pipe transits. Seals are integral parts of a safe electrical distribution system in harsh and hazardous environments. Because there are many sealing options available, having a working understanding of the benefits and installation & maintenance requirements of the various options will help in selecting the. Henkel's polyurethane or silicone sealing foams protect the electronics in control cabinets and electrical distribution boxes against external influences, such as moisture and dust, which can cause corrosion and contamination. Proper sealing of these entry points is crucial for safeguarding electrical installations from moisture, dust, and pests, while. Cables, cable bundles, conduits, bundles of conduits, empty pipes, cable trays and cable ladders may also pass through penetration seals in walls and floors and should be taken into consideration during all phases of design and application.



Article Content

Cable Entry Seals 101: Everything You Need to Know

Cable entry seals may be small, but they play a huge role in ensuring the safety, reliability, and longevity of your electrical systems. By understanding the different

How to Properly Seal Cable Entry Holes

How do you seal a cable entry hole? This guide covers how to properly seal cable entry holes, what products you need and why it is an important thing to do.

Cautions and Requirements for Installation of

Distribution box is a low-voltage distribution device which assembles switchgear, measuring instruments, protective appliances and auxiliary equipment in a closed

Top 6 Cable Entry Systems for Sealing and Protection

Why It Ranks Here: Murrplastik's cable entry frames are small and cheap. They don't seal up as well as some other things, but they work great for basic setups where

A complete analysis of the cable sealing process for waterproof ...

In waterproof junction box, cable waterproofing is very important, especially in outdoor or humid environments. Here are several common cable waterproofing methods: Sealing glue: Use

Cable Entry Seals for Sealing Protection | TE Connectivity

Our eat-shrinkable cable entry seals (CES) are designed to provide a watertight, fume-tight seal where cables enter connection boxes, bulkheads, or other

Entry seal for electrical cabinet enclosures | Roxtec Inc US

Roxtec cable and pipe entry seals for every industry Are you looking for an entry seal for an electrical cabinet or an electrical enclosure? Our reliable and flexible sealing solutions for cable

Grounding System Installation Standards for Distribution Boxes and ...

Hey there! If you're working with electrical systems, you know that grounding isn't just some bureaucratic requirement—it's literally the difference between a safe, functional system and a potential disaster.

How To Seal Exterior Cable Hole

Duct seal is a non-hardening putty used to seal electrical ducts against water and insects. It is typically used for large exterior holes with

Cable Entry Seals: A Complete Beginner's Guide

Cable entry seals play a crucial role in protecting electrical systems and enclosures from environmental hazards like dust, moisture, and temperature changes.

POWER CABLE TERMINATION AND SEALING

Power Cables Termination and Sealing End Requirements The servicer should terminate and connect up the power cables in accordance with diagrams or

How to Install a Cable Distribution Box Safely and

In modern electrical systems, cable distribution boxes (also known as electrical distribution boxes or distribution boxes) play a crucial role as the key

Securing electrical cables to holes in enclosures?

They are screwed on, the cable past through, then the grip part is screwed. These prevent the cable from moving in or out, as well as sealing the hole. Most can

Study on Cable Hole Sealing Device for Distribution Box

In this paper, the problems of plugging structure easy to fall off and hardening cracking caused by traditional plugging methods such as cement plugging for distribution box cable holes are analyzed.

Achieving Resiliency by Sealing Vulnerabilities

Cables entering or exiting a manhole or hand-hole have to be sealed. Cables in a manhole should be tied to shelves away from the manhole floor to avoid damage by water when water leaks into a

SEALING OF CONTROL CABINETS & ELECTRICAL

After more than 30 years of practical experience of the sealing of electrical distribution boxes, the foam gasket (tested according to DIN EN 1856) shows very good recovery behavior (DVR) even after

Cable and pipe seals for power transmission and distribution

Roxtec UGTM transits for underground use Roxtec UGTM transits are for single or multiple cables and pipes entering via foundations. The seals form a long-lasting barrier against flooding, humidity, gas,

Effective Techniques for Sealing Cable Entry Points

Effective techniques for sealing cable entry points involve using high-quality sealants, employing grommets or cable glands, and ensuring a clean and secure installation.

Cable penetration seals according to European Standards

The table shows that penetration seals of all cable groups were tested with PROMASTOP ® -CC. It is advisable to consider the fact that a thicker mineral

Correct Installation Method Of Sealing Strips And Waterproof Rings In ...

When installing outdoor junction box, ensure that the sealing strip or waterproof ring of weather proof box is in close contact with the surface of outdoor weatherproof box to prevent water

How to Seal an Electrical Enclosure? [May 2026]

Learn how to seal electrical enclosures effectively to protect equipment from moisture, dust, and harsh environments. Step-by-step guide and

CABLE ENTRY SEALS

The Roxtec HD 32 (High Density) is a corrosion resistant cable entry seal for sealing and terminating up to 32 cables in one single cut out in junction and terminal boxes.

Achieving robust seals in hazardous electrical installations

Seals should be inspected after curing and before the system is energized, and again on a yearly basis. Seals are integral parts of a safe electrical distribution system in harsh and hazardous environments.

Study on Cable Hole Sealing Device for Distribution Box

Published in: 2022 China International Conference on Electricity Distribution (CICED)
Article #: Date of Conference: 07-08 September 2022 Date Added to IEEE Xplore: 02 November 2022

Contact Us

For more information, pricing, or custom solutions, please contact us:

Website: <https://tooltechnologyapplication.com.pl>

Email: info@tooltechnologyapplication.com.pl

Phone: +49 69 3527 4819

Address: Neue Mainzer Straße 66, 60311 Frankfurt, Germany

This document is for informational purposes only. Specifications subject to change without notice.

